



Mount Seymour United Church



2015

Annual Report

Nurturing Spirit • Being Community • Living Generously



~SPIRIT NURTURING
~LIVING GENEROUSLY
~BEING COMMUNITY

LIVING THE CORE VALUES OF

- *Trusting in the goodness of life*
- *Treating ourselves, others and our world with grace and compassion*
 - *Honouring each individual's spiritual journey*
 - *Empowering people to claim their spirits-given gifts*
 - *Striving to practice the way of Jesus*

Mount Seymour United Church

2014 ANNUAL REPORT

TABLE OF CONTENTS	PAGE
Report from our Council Chair	4
Staff Reports	
▪ REPORT FROM OUR MINISTER.....	6
▪ ASSOCIATE MINISTER.....	8
▪ CHILDREN AND FAMILY MINISTRY COORDINATOR.....	9
▪ MUSIC LEADER JULIAN PATTISON.....	11
▪ CHURCH ADMINISTRATOR.....	12
Team Reports	
▪ BUILDING TEAM REPORT.....	13
▪ ADMINISTRATION TEAM REPORT.....	16
▪ WORSHIP AND CHRISTIAN DEVELOPMENT.....	18
▪ MISSION AND OUTREACH.....	21
▪ THRIFT SHOP.....	23
▪ MINISTRY & PERSONNEL REPORT.....	25
▪ PRESBYTERY.....	27
▪ CONGREGATIONAL LIFE.....	29
▪ FUNDRAISERS AND EVENTS.....	30
Passages.....	32
USER GROUPS.....	33
▪ MOUNT SEYMOUR CHILD DEVELOPMENT SOCIETY.....	34
APPENDIX	
▪ Minutes of the 2014 Annual General Meeting.....	36
▪ Statement of Financial Position at December 31, 2014.....	39
▪ Statement of Income for 2014 and Budget for 2015	40

REPORT FROM OUR COUNCIL CHAIR | BETTE SHIPPAM



It's been a pleasure to have served Mt. Seymour United Church council for a two-year term which wraps up in June, 2016. To my deep gratification, 2015 has been a year of whirlwind activity and intense change for MSUC in that we've re-vamped our physical interior to match more of our spiritual intentions, and the results are utterly delightful.

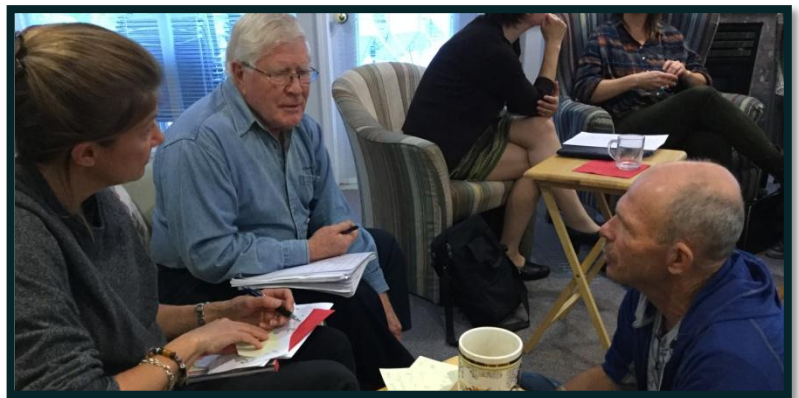
To this effect, our capital campaign of 2014 was put to good use, and staff, congregation members, visitors and rental groups all acted generously and accommodated a construction zone! Daily, our space transformed in front of our eyes, and we learned so much about safety and helping each other in these adjustments. Our industrious Building

Committee, led by James Fulton and Sharon Brain, spent hours connecting and communicating phases of the project with all groups and staff, including a new 'family' of construction workers.

By Fall, 2015, new capacity for dynamic and creative activities and functions became available for groups by way of a café, open foyer, library/den, dedicated spaces for our beloved Thrift Store and the preschool area, welcoming offices and space for our staff and ministers, and multiple repairs including a beautiful new Church entry embodying our 'welcome' to all!

Changes to our ministerial leadership saw the welcoming back into our community of Rev. Wade Lifton, ordained with our full blessing in 2015. He is now our "Minister of Community Outreach and Emerging Ministries," and provides the 'connective tissue' on behalf of the church with all our members, user groups, thrift store and community beyond. We are very grateful for his skills in community development in this regard. He teams with our cherished Senior Minister, Reverend Nancy Talbot, as well as our amazing Children/Youth Minister, Anne Ellis, supported by Julian Pattison, our talented Music Leader, and the Gospel Choir team: Marcus Mosely and Dominique Hogan. Sharon Stevens, our wonderful Church Administrator, keeps all our operations in smooth order. She is aided administratively by so many volunteers, and I would like to especially thank our envelope officer, Fay Butterfield, Sharon Brain, Meg Clarke, Laura Staude and many others for their support in this regard.

Council held a meaningful retreat in the fall (photo, right), and I am happy to report that it was inspirational, imaginative, and cohesive in the refining of leadership strands and priorities for Mount Seymour United Church. The priorities are: nurturing relationships, communications, financial planning/sustainability, and plans for new spaces/ministries at MSUC. Council meetings have been restructured somewhat to include allocated time for creative brainstorming



and planning for moving along these identified components of our church life. Our hope is to continue to grow our 'vision' as we simultaneously allow for emerging capacities and creative projects for the church.

Another goal for council in 2015, saw the strengthening of our financial oversight capacity by welcoming Heidi Carota as a new accounting staff. She's been a marvel providing council, and our treasurer, Roger Brain, and his financial planning and sustainability committee with excellent information to help us to set our financial goals and budget.

Since this is my last message as Council Chair, I'd like to take the opportunity to thank some individuals who have helped me as Chair, in particular: all those mentioned so far, plus: Reverend Donna Dinsmore, who saw us through Nancy's sabbatical this past year, Roger Brain, for undertaking the role of Treasurer and bringing in his expertise in that regard, Alan Furniss, for his steadfast and compassionate support of me as Chair, Carol Kelly, and her fabulous Thrift Store team and the wonderful work they all do, Steve Wellenbrink, for taking on the role of communicating with Presbytery this year, Catherine Branch, who on top of everything else she does as Worship and Christian Development Team chair, led a wonderful Christmas Choir and has taken on the role of re-planning our communication plan, and all the other team leaders in our Church. I'm deeply grateful for the work you all do, and I look forward to seeing how Mount Seymour United Church continues to stand 'united' in exemplifying the tenets of "Nurturing Spirit, Being Community and Living Generously".

With respect, Bette Shippam



REPORT FROM OUR MINISTER | REV. NANCY TALBOT



At a recent Council meeting I asked our members “if you were to put a title on the year 2015, what would you call it?” We played with words like “framing, supporting, flexible, adaptive, transition and transformation” until we landed on not one but two descriptive titles: “A Moving Year” and “Building a Foundation.”

Indeed 2015 was a moving year in many ways. We literally moved walls, dirt, people and goods. We tore things down and built them up. Beyond the physical changes to our space, our hearts and souls were moved. The grace and generosity of everyone who gave of themselves so freely to make our renovation happen touched us. The deepening of our relationships transformed us. The glimpses of what could be,

the hint of even better things to come energized and enlivened us. 2015 laid down a solid foundation for the present and future ministry of our church. As we continue to ride the tides of change, we have a greater sense of the importance of the relationships that knit us together and the Source of Life that sustains us. Who would have known that the dream of opening more places and spaces to experience the Sacred in community in our building, would open such wonderful places and spaces within us?

It is a testament to the strength, commitment and tremendous gifts of our community that all of this happened in 2015, a year I took leave for my sabbatical. I am truly grateful to our Worship and Caring Teams in particular along with our Council and staff who made it possible for me to take time to tend my body, mind and spirit and enjoy the company of my family. During my time away I was able to visit other churches and emerging ministries, as well as attend a Courage and Renewal Leadership Academy in Bainbridge Washington and the Epiphany Explorations annual conference in Victoria. Returning to a CBC film crew and reporter interested in what we are about at Mount Seymour confirmed for me what I learned when I was away, that we are a community leaning into the future with courage and hope and that is greatly needed in our day and age.

After 11 years of serving our church, I have returned from my sabbatical ready to commit myself to the next stage of our ministry. Our family’s decision to move in the neighbourhood (finally!) is an indication of the call we feel to live and serve this community and we couldn’t be happier to be living where we are.

I am grateful to share ministry with such a strong leadership team. We will miss Bette Shippam’s steady and creative presence as Council chair, Laura Staude’s thoughtful navigation through several hires as chair of Ministry and Personnel, Meg Clarke’s wise and knowledgeable guidance particularly around issues of stewardship and governance and James Fulton’s undying commitment to our building as head of our Administration Team not to mention his wealth of knowledge about fixing anything and everything. James skillful handling of our renovation project along with Sharon Brain, Burton Branch and our Building Advisory Team are to be greatly commended. I look forward to continuing to work with our Treasurer

Roger Brain, and Council members Barry Fenton, Catherine Branch, Kathryn McKay and Carol Kelly who along with Bonnie Wudrick who co-chairs our Thrift Shop Management Team have shown extraordinary commitment as we have moved through the transitions of this year. Thank you to everyone who has volunteered their time and supported our ministry in so many varied ways.

Finally, every week I get to experience the gifts of such an amazing group of co-workers: Donna, Wade, Anne, Sharon, Julian, Marcus, Dominique, Heidi and Sheldon. Thanks be!



Council Retreat 'Selfie!
Rev. Wade, Rev. Nancy, Bette Shippam

The welcome we extend in this church is as broad and deep as we can make it. We welcome you wherever you are on life's journey, no matter how young or old you are, whatever your marital or economic status, sexual identity, ethnic or cultural heritage. We welcome those who consider themselves to be Christians, those who are part of other faith traditions and all who seek to explore the mysteries of life and serve the ideals of compassion, justice and peace.

REPORT FROM OUR ASSOCIATE MINISTER | REV. WADE LIFTON



When I arrived in the summer to start a new ministry position this place was in chaos. All of us were adapting to temporary spaces and construction noises. What was tangibly noticeable in the midst of the chaos and challenges was the grace and good will being offered to one another.

Since then we've been adjusting to our changed building. From my new office I've heard exclamations of delight as people walk in the door for the first time. I've had conversations about disappointments over pieces of the renovation that didn't happen as hoped. There have been glitches and gratitude. There have been hard choices and Hallelujahs. Sounds like the nature of being community together.

The disorientation and reorienting to changed doorways and walls reflects the disorientation and reorienting to being church in an ever changing world. In my role of Emerging Ministries and Community Outreach I am supporting the ways we navigate our changing realities, including:

Supporting the work of the Thrift Shop

Facilitating discernment around revitalizing our Mission and Outreach work

Helping us live into our new café and foyer space in ways that embody the welcome we seek to live

From its beginnings the nature of Christianity has been disorientation from ways of dominance and re-orientation to the ways of grace. Historically the church has been most damaging when it is too stable and confident.

Perhaps the greatest gift of changing our building has been the opportunity to practice grace and good will in the midst of chaos and challenges. May we be blessed with ongoing opportunities to continue this practice together.



CHILDREN AND YOUTH LEADER | ANNE ELLIS



2015 saw a lot of growth in Children's Community. We grew in numbers with both children and leaders, and we grew in our learning and exploration of God and Faith.

In 2014 we were averaging 8 -10 children weekly in CC, by the end of 2015 we noted an increase to averaging 12 -15 children weekly. We brought on more leaders and completed the year with 10 leaders. Amy W., Matt B., Michelle C., Mary S., Ward B., Leslie B., Sherrill M., Jen Beth F., Olivia B., Sara V.

We listened to questions that the children had about God and Jesus, and tailored our Sunday programming to explore those questions. In the spring, a child mused on whether or not "Jesus was a Superhero?"

We spent a number of weeks wondering about an answer to that question. We learned the stories of Jesus' miracles and held small group conversations about whether a particular story made Jesus look like a Superhero or not?



Answers were charted and every child had the opportunity to say, Yes, No, Maybe, don't know. When we began the series many of the children were quite confident in their beliefs about Jesus being or not being a Superhero. Yet, by the end of series most of the children had changed their opinions to 'maybe'.

It was facilitating to watch the children learn discernment skills, conversation skills and listening skills. When they began to realize that we weren't looking for a definitive answer they allowed their natural curiosity take over and simply wonder.

The Superhero project never intended to discover an answer to the question, rather encourage exploration, listening. We wanted to help the children experience the sharing differing ideas and having all ideas validated and be listened too. It was a powerful experience.

In February we took seven children to "Imagine: Children's Retreat" at Stillwood retreat center near Cultus lake BC. We had amazing warm and sunny weather for camp and all the children had a wonderful time exploring their faith, making friends and eating really good food! Each year we've increased the number of children who attend this Retreat which brings together 100+ children aged 8 -10 and 30+ Youth and Adult leaders from all over the lower mainland.

With the renovations in the summer, we did not hold a summer camp this year. It's absence was well noted and we made the decision to bring 'Camp Spirit' to Mount Seymour in the summer of 2016. By the fall we were ready to get comfortable in our new places and open spaces of our newly renovated building. The children enjoyed exploring the new areas and finding 'their' places to hang out. While we hold Children's Community in the beautiful Deep Cove Room and the lovely Preschool Space, the children have discovered the new and cozy Library as a comfortable room to hang out in.

Most children can be found there before, after and sometimes during worship services. We love having all of our Sunday morning supplies easily accessed and stored all in one place (the Deep Cove Room) and love the comfortable way the room has been decorated.

In the fall of 2015 we 'found our way in Creation' with the children. Leap Frogging on the congregation's theme of 'finding our way' the children explored the story of creation by getting right into the heart of creation.

We painted the Ark that was a part of the congregations worship, We made bird feeders and spent a few weeks outside creating nature sculptures with items we found in nature. The children and leaders greatly enjoyed the creative endeavor and all of us are looking forward to doing similar explorations in the future.

For Advent this year the Children engaged in a number of fund raising projects to raise money for our Syrian Refugee Family Fund. They sold candy canes, by donation, had a tea and coffee sale after church and sold Hot Chocolate at our annual Community Christmas Encounter. They raised \$670 in total during the month of December.



Over all 2015 was a wonderful year in Children's Community. The children feel welcome and are excited and interested in attending CC each week.

I would like to extend my thanks to all the leaders and adult volunteers who have attended CC on Sundays and other events put on by the Children's Community. You all have my undying gratitude for your leadership and support of CC, it would not be as great as it is without you!

MUSIC LEADER | JULIAN PATTISON



Music is a very important part of our Sunday worship life - we are so blessed and grateful for the multitude of musical offerings in 2015.

Our Sunday morning music program went through some transformation this year. Rev. Donna Dinsmore provided significant musical leadership throughout the first part of the year, leading the "Voices" group and accompanying congregational singing. Julian Pattison filled in during Nancy's sabbatical, and enjoyed it so much he returned to the music director role upon Rev. Donna's move to Bella Coola. Although we no longer have a regular focus on the traditional "choir" format, we very much appreciate the faithful group of singers that joins on Sunday mornings. Special thanks to Alan Furniss, Bobbie Grimard, Eunice Findlay, Fay Butterfield, Fran

Wright, Gillian Cole, Ian Jarvis, Jane Thomson, Katie McAleer, Mardi and Stan Joughin, Marlene Plezia, Susie Ha and Sylvia and Gert Zandberg for their musical contributions.

Each month we welcome and enjoy Marcus Mosely and Dominique Hogan's leadership as they lead the community Gospel Choir, composed of any who wish to join them. We have experienced truly inspiring and moving worship provided by their leadership and look forward to hearing the choir and their dynamic musical talents. Many thanks to Dan Morrison and Chirstian Findlay who volunteer as guest musicians on Gospel Sundays!

This year Catherine Branch led a choir on Advent III and Christmas Eve. We had a great turnout and very much appreciate the contributions of Catherine and all the participants - including several from out of town!

We are very thankful for our "in-house" musicians especially Mary Sparks, Ruth Townsend, and on occasion Ian Jarvis who who enhanced our worship with their offerings. We are grateful for Ruth's willingness to lead music on thee Sundays Julian is unable to do so.

We were again blessed with guest musicians this year, including the North Shore Chorus in Advent, Marcus Mosely at the Blue Christmas service and the mixed abilities choir in May.

Respectfully submitted,

Julian Pattison



ADMINISTRATOR/ COMMUNICATIONS COORDINATOR | SHARON STEVENS



Well, this certainly has been a busy year around Mount Seymour United! 2015 began with a freshly configured administration office. We created a separate office space within the office, designed primarily for volunteers, which houses the photocopier, office supplies, as well as storage for all the various teams in the building. In June, the office moved down to a temporary location in Parkgate hall. Much of my summer was spent working with Sharon Brain on church storage and organization. We wanted to make our building as 'user-friendly' as possible, and to that aim, we created what we hope is clearly labeled storage spaces throughout the building. The kitchen was a particularly big task!

In 2015, I was part of a team that is looking at redesigning and refreshing our church communications - all the way from weekly e-newsletters to event flyers to the website. **The Christmas postcards (right)** were one of the first designs to come out of this project. More to come!

If I had to summarize the year in one word it would be: 'grace'. Living through this year at Mount Seymour, I've really come to understand grace as a way of being. I believe that one of the things our community here does so well is grace. We strive to welcome others with grace, to treat one another with grace, to hold our tender selves with grace and loving kindness.



As part of the building team and committee in 2015, I got to witness firsthand people living out of this place of grace. We all came in to the project with strong ideas and visions of how the building was going to look, and not all of those ideas necessarily lined up. But through our strong leadership, both ministerial and lay, we were led to listen deeply to one another and to hold space for all to be respectfully heard. It wasn't always easy, but it felt to me that underlying every discussion, every decision, there was a deep abiding respect for one another. Grace, personified.

This seems like the best place to recognize and name the many many people that have made my job so much easier this year. Thanks to James Fulton, Sharon Brain, and Burton Branch who worked tirelessly to get our space looking so beautiful. Thank you to the Counting Team, led by Donna Pawluk and including Burton Branch, Barry Fenton, and Gladys Johnston. Thank you, Fay Butterfield for continuing to do such a great job managing the congregational donations and tax receipts. Thank you Heidi Carota for taking on the accounting! Thank you to our fabulous contractors, Naikoon, who were ably led by the always affable Josh Klein. Thank you to the office volunteers, particularly Heather Woolstone who joins me every Friday morning.

I look forward to the coming year at Mount Seymour as we live into this beautiful new space that we've created together! Respectfully, Sharon

BUILDING TEAM REPORT | JAMES FULTON



After almost 7 years of discussing and dreaming what our beloved Mount Seymour might become, 2015 saw that dream unfold to become a reality as the project progressed this year through the award of the chosen Architect in December, 2014, the award of the General Contractor in May 2015 and culminating in the actual on-site construction starting mainly at the end of June, with the main thrust of construction taking place during July to September.

The Building Renovation was made up of **James Fulton, Sharon Brain, Burton Branch, Sharon Stevens, (photo above),** along with Nancy Talbot and Wade Lifton.

The Advisory team supporting the Renovation Team consisted of Anne Ellis, Ellen Muirhead, Carol Kelly, Anne Devent, Irene Huva and Bonnie Wudrick.

Since the project's inception, the actual pathway to successful project completion was the culmination of just some of the following activities listed below:

Continued consultations with user groups and regulatory bodies, visiting other churches, cafes and kitchens to gain their experience, creation of a plan incorporating the needs of all proponents whilst also allowing space for new energies to unfold.

Design development of all the affected areas within the building footprint and the new spaces including an outdoor storage shed located in the NE corner of the property

Development of a detailed construction cost estimate to support the level of funding available to the renovation. Development of a detailed plan for the continued operation of the Thrift Shop and the Preschool throughout the construction period. This included a detailed schedule of the activities to both remove and store all of the Thrift Shop and Preschool articles and also the methodology to return all of those articles to their new locations in a very short period of time once construction was completed. This plan also included temporary relocation of all ministerial, children's community and office staff offices and equipment until the new offices and associated area were made available



Development of a detailed building access plan for all ministerial, office, congregational and user groups as the construction shifted from one area to another, thereby blocking off access and creating potentially hazardous conditions to occupants. Deserving particular merit were Sharon Brain's efforts, ingenuity and signage acumen which spearheaded this successful thrust.

One of the fundamental project imperatives was to ensure that our commitment to meet the 2 "sacrosanct" dates for the Thrift Shop and Preschool occupancy after construction finished. This was successful in no small measure because of this planning.

As a renovation project, predictably, we encountered many unknowns of which the 2 major events had the potential to seriously prejudice the project's success, both financially and schedule-wise and to which we had to respond in a manner which did not unduly place an impossible burden on the project. This period was a very hard time for all of us on the project!



Since its inception and until the detailed design had occurred, our overall Project cost estimate was based on a conceptual design plus allocation of large, industry applicable standard contingencies and we fixed the overall project cost at \$550,000.00 of which only \$390,000.00 was for known, firm "identifiables" with the balance in contingency and allowances. The architect's fee percentage was also based on their bid estimate construction contract value of \$ 360,000.00.

One of the architect's first activities was to produce a detailed construction cost estimate within 2 months. This 19 page detailed estimate by Armstrong Moore and Associates was \$ 424,000.00 of which \$ 362,400.00 were fixed costs.

Obviously this figure still showed reasonable conservative agreement with all our previous work, since this appeared to allow us \$ 126,000.00 for our own [owner or indirect] costs. To that date we felt comfortable with these confirmations

After the award of the construction contract, in their June, 2015 Executive Summary, the contractor, Naikoon advised us that their latest, detailed estimate for the construction only, as defined on the specifications and drawings, came to \$776,000.00.

Our first negotiation with Naikoon reduced this estimate by \$ 259,200.00 by eliminating some 22 items, mostly of an architectural, cosmetic or decorative nature, especially to the outside plaza and proposed 170ft shade wall, for a total contract of \$516,800. A further major deduction was also applied after our successful appeal to the District to remove the requirement on the drawings for installing underground drainage lines from the SW corner of the property line to the Drop off canopy on the SE side for a reduction of approx. \$ 72,000.00.

It became clear in August that some of the Building Envelope Fund would have to be used for any potential overruns, because of the significant cost increment associated with replacement of the existing Front Entrance canopy, not in the original scope of work. This was exacerbated a few weeks later when the deterioration due to defective parapet wall design was found when demolishing the front canopy and as advised in our October report to Council, we would now probably require the majority of the Building Envelope Fund.

Although the consultant's estimate to repair the Parapet walls was \$ 92,000.00 it was later confirmed that this could be deferred at minimum risk until done in conjunction with roof replacement at a later date and we actually spent approximately \$13,000.00 of this amount to replace the parapet walls - only in the area of the front entrance – but not because of the parapet design defect but for the reason that unfortunately, the design of the new canopy overlooked the need for a rainwater seal between existing parapet walls and the new free-standing canopy, so the existing parapet wall was replaced by one double the width in order to correct defects in the design of the new canopy

Regrettably, parapet and roof repair issue took over 4 weeks at the peak of construction to resolve. On the plus side it again emphasized the importance of having a good relationship with our outstandingly competent and obliging construction superintendent in Josh Klein, who played such an integral role in managing the project in such an evenly balanced way.

Currently we are in the process of organizing and refining a punch list of those items still needed to be done as we gain experience in living with our new space. The list has been prioritized by these items according to the need to be done now, later or part of the "Wish List" when we have funds available.

Listed under the Administration Team Report are some of the items, more of a maintenance nature, which due to timing, were also done under the overall construction contract with Naikoon.

My gratitude and thanks go out to everyone for their generosity, grace and patience in living with the chaos, discomfort, delays and disorder we caused over the summer. I sincerely hope we all might think it was worth it!

My thanks also to the members of the Building Renovation and Advisory Teams with my special gratitude to Sharon Brain for her planning, organizational and capable support.

On behalf of the team,

James Fulton



New front entrance decorated for Advent

ADMINISTRATION TEAM REPORT | JAMES FULTON



As is to be expected with our venerable building, even simple routine maintenance continues to require our increasing attention as we continue to face the never ending dance of repair versus replacement: often requiring creative solutions.

We have created and now continue to work down a prioritized list of items both left over from the experience of the renovation project as well as a “Wish List” of all those items we would like do if and when resources become available.

The funds raised a number of years ago for the building envelope and HVAC replacement have now been virtually depleted over the last year and obviously significant consideration needs to be given to again creating a contingency plan for the eventuality of equipment replacement in the years to come.

The A Team continued to play an integral role in the development and execution of the Building Renovation Project during 2015. Linked with the renovation was an assessment of a number of other potential interfaces, normally considered more of a maintenance nature than renovation plus the decisions needed to incorporate their impact during the construction period over the summer of 2015.

These include the following:

Front Entrance Canopy/skylight

The most pressing and costly was the replacement of the existing front entrance and solarium, not originally considered a part of the renovation project scope but suspected, in late 2014, to potentially have a condition requiring it to be replaced in parallel with the Building Renovation Project. The existing solarium glass panels was replaced with a pyramid-shaped skylight over the internal entrance, resulting in improved aesthetics and security.

Building Upgrades to Seismic, Electrical and other BC Occupancy codes

2015 saw a province-wide implementation of a new revision to the existing codes and standards for buildings and occupancy. This impacted us in a number of areas:

- occupancy activation and motion sensing switching in all new areas
- Use of LED fixtures wherever we replaced lighting,
- east wall of the narthex was converted to shear



- handicapped-friendly self-opening doors, hardware, wiring and push button stations
- New Exit signs over doorways
- electrical breaker replacement (mainly kitchen)

New Office HVAC System

Building Audio and Video Systems

The continued generosity of the gifts of their time and resources by the Fowlers, who last year donated the much improved high-output overhead projector for the Sanctuary, continues this year with their generous contribution including, not only the café space audio, video and wall-mounted TV but also an ongoing contribution in developing our overall audio, video and computer access systems further. Thank you both so very much.

Lawn cutting and Pruning Gift of Service

Thank you to Dorothy Redlinger for your most generous gift of ensuring our lawns are taken care of as well as the pruning of our beautiful Peace Garden.

Little did we know when this gift was offered that it would also have a significant contribution to our new building design and layout. By allowing us to get rid of all gasoline-powered maintenance equipment and their associated odour we were able to completely re-think our A-Team storage requirements. This, in turn, allowed us to create, at minimal incremental value, the cozy, pleasant, new Library area now so well used.

Garden and Cleanup day

Thank you Gladys and also your team of dedicated gardeners, each with their own allotted areas for tending our spaces with such care, energy and creativity.

We trust that this year's cleanup will allow us to remedy all of these areas and to make good the damage done to the lawns during construction this year.

Cleanup Day (photo, right) was again a well-attended success with the weather being reasonable. Our sincere thanks to everyone who attended and helped to improve our special spaces.

Please feel free to contact me or any of the A Team if you want to volunteer or join the team.

Submitted by James Fulton on behalf of the A Team

(Gladys Johnston, Stan Joughin, Sharon Stevens, Ian Jarvis James Fulton)



WORSHIP AND CHRISTIAN DEVELOPMENT | CATHERINE BRANCH



2015 was a year of change in so many ways around our church family – building and people. But the important work that we do and the spirit that we carry as a community carries forward as we can see looking back.

Sunday Morning Worship

We had a lot of comings and goings on our Worship Team this past year. Reverend Nancy took her well deserved sabbatical from January to April. Under Reverend Donna's strong leadership, we did not need to look far from our own front doors as we covered this time in creative ways and with new lay leadership. On July 5, Reverend Donna left us to begin her own pastoral charge in Bella Coola. She left a big hole in our hearts but our loss is a huge gain for Bella Coola! And over the summer, after hard work by our search committee, life came full circle and our former children's minister, Wade Lifton, joined us as a fully ordained minister to serve us in our Emerging Ministries. Julian Pattison joined us as our Music Minister for $\frac{3}{4}$ time. With Reverend Nancy, Reverend Wade, Anne Ellis and Julian, we are so very fortunate to have such a strong leadership team.

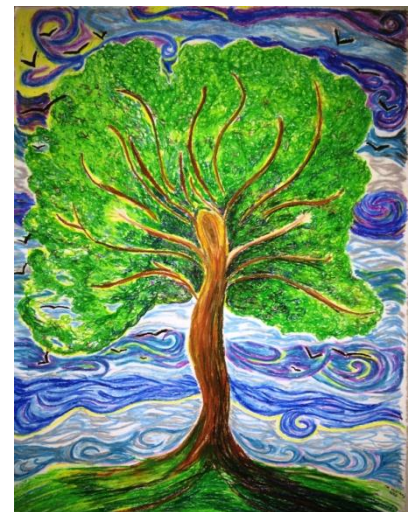
Sunday morning worship continues to be thoughtful, engaging and creative exploring new and creative themes. From Advent to Lent, we looked at the theme of Light in Bible stories and in our lives.

During Lent, our theme was "Landscapes of our Faith Journey". We had presented for us a wonderful Lenten booklet that provided us with readings and thoughts for our theme which kept us all on the same page and prepared us for Sunday worship. A series of weekly community walks deepened conversation around this theme. We also had a visual art display where members of the congregation were invited to provide their visual representations of the landscapes of their faith journeys, which were displayed in the Sanctuary. The result was beautiful and moving.

In May, we were able to use technology to our advantage so that those of us who were unable to attend BC Conference in Whistler were able to see Reverend Wade's ordination. We joined the simulcast in our own sanctuary and cheered with the rest of Wade's supporters at the end of

the process!

Over the summer and early fall, you may remember needing to be creative in how you entered the building as our renovation entered its busy stages. Kudos to all who found the back door and kept the community vital! We are certainly happy with the outcome!



Lenten Artwork by Anne Ellis

In Advent, our theme was “Christmas Unwrapped”. The traditional themes of hope, peace, love and joy were turned on their heads and we were reminded of the fact that Mary, Joseph and Jesus were refugees not dissimilar to the refugees that we are attempting to assist in the present day.

We have a busy place during the Christmas season. As well as the Community Christmas event, we held an Advent retreat, a well-attended Blue Christmas and had a **Christmas choir (photo, right)** that led the congregation on one Sunday and Christmas Eve.



Adult Faith Formation

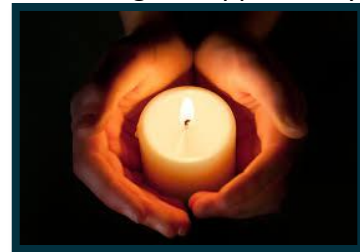
Three Seasonal Retreats were held this year: Lent and Pentecost Retreats were led by Rev. Donna Dinsmore; and Advent Retreat was led By Rev. Nancy Talbot and Anne Ellis

Life Groups met from January to June led by David Ney, Anne Ellis and Sharon Stevens. Topics discussed included: *What makes a church a church? Why and how do you pray? Does it matter what we call God? and What happens to us when we die?*

Ignatian Spirituality Circle met monthly led by Sharon Brain from January to March, and Rev. Nancy from April to December. Anne Ellis led **Lectio Divina** on Friday mornings.

Monday Night Practices: In September we initiated this new program offering the opportunity to engage a different Spiritual Practice each Monday of the month.

- 1st Monday: Meditation with Sharon Brain
- 2nd Monday: Ignatian Spirituality with Rev. Nancy
- 3rd Monday: Soul Collage with Carol Pettigrew
- 4th Monday: Lectio Divina with Anne Ellis.



Animate Bible (photo, left):

A six week Bible Study series led by Rev. Nancy and Rev. Wade was held in our new cafe space. Each session included a video featuring a leading voice from the Christian faith, time for personal reflection and group interaction. A core group of about 20 people faithfully attended growing in their understanding and appreciation not only for the Bible, but for one another.

Community Outreach

We held two community events – at Easter and just before Christmas - headed by Anne Ellis. There were many volunteers who made the events a huge success!! There were crafts, a short worship service and the good food to be shared. We made a welcoming space for the community and look forward to doing so again. We also had our first (and hopefully annual) **Pumpkins, Pies and Potluck (photo, below)** just before Halloween. Families brought their pumpkins to carve and food to share and people made their best pies for judging and auction! It was wonderful fun and raised several hundred dollars for our refugee fund. Finally, we had our annual Advent Wreath making event and lunch which was enjoyed by all.

This year has had many celebrations and many changes. I look forward to another extremely successful year to come! Congratulations to everyone in the Mount Seymour family!



Respectfully submitted: The Worship and Christian Development Team – Nancy Talbot, Wade Lifton, Anne Ellis, Julian Pattison, Jen Beth Fulton, Bette Shippam, Carol Pettigrew, David Ney, Catherine Branch



Our new Communionware was purchased with funds donated in celebration of the 25th anniversary of our building last year.

It was made for us by Rev. Daryl Auten

MISSION AND OUTREACH | KATHERINE MCKAY

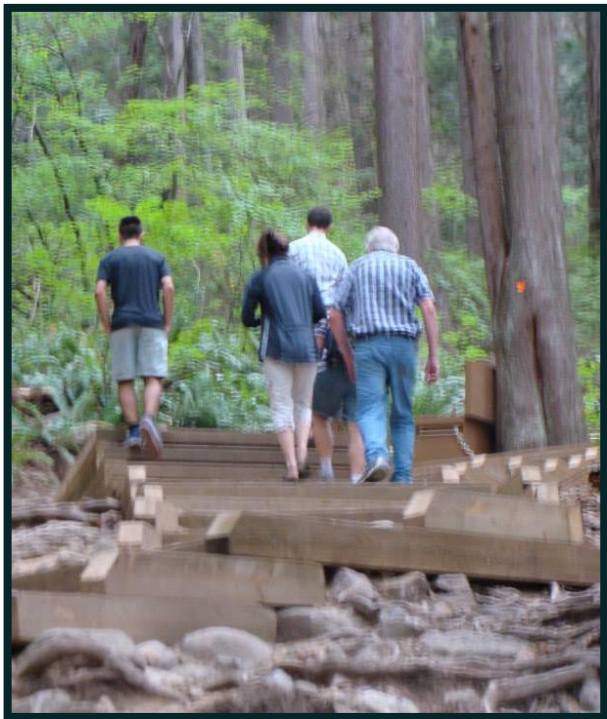
The Congregational M&O Team is comprised of Dilys Sostad, Barb Ralph and myself, Katherine McKay. We endeavour to continue to support our ongoing initiatives throughout the year as well as being mindful of “how the Spirit might be nudging us going forward” as Rev. Wade Lifton has aptly expressed. I so appreciate his presence and support to our M&O Team.

Outreach to First United Church continues to be the focus of many programs.

A small group of dedicated volunteers, led by Joyce Jones, meets two Mondays a month to prepare **sandwiches for First United Church** (*photo, right*).

Ready Readers are provided so that the downtown eastside community members are able to read and fill out important forms.

The M&O Team monitors the weekly bulletin which expresses the needs of 1st United and tries to accommodate these needs with items from the Thrift Shop.



Items such as CD's, magazines, textbooks, books, games and puzzles that are not sold in the Thrift Shop are put aside for the Sanctuary/Lounge area for patrons of First United.

Christmas in June and October's World Food Day are additional opportunities for the congregation to donate food and funds for 1st United.

Annually, in conjunction with First United, a picnic and activities are planned at Panorama Park. The weather this past year was not the best but turn-out was still quite good and many enjoyed canoeing and kayaking and **hiking to Quarry Rock** (*photo, left*). The lunch was provided by First United and congregation members donated delicious treats for dessert.

Outreach to the North Shore Youth Safe House (NSYSH)

In the month of December the Giving Tree goes up and is the focus for collection of much needed clothing and toiletry items for 1st United and the local North Shore Youth Safe House. This past year was particularly successful with the congregation members and the Preschool donating approximately 15 boxes of wonderful gifts to First United and about 8 boxes of gifts to the NSYSH.

The Mission and Outreach team continues to support the Thrift Shop. Annually there is a Thrift Shop Christmas Tea for the patrons. Congregation members and Thrift Shop volunteers supplied wonderful baking that was enjoyed an extended length of time this past Christmas due to the new Thrift Shop hours.

The Maundy Thursday pot luck dinner in March for Thrift Shop patrons was well attended by over 100 people and coordinated by Dilys Sostad.

Thank-you to Dilys Sostad, Barb Ralph and Rev. Wade Lifton for making our meetings enjoyable and succinct.

Lastly, we are very grateful for all those volunteers who ensure the success of the M&O programs.

Respectfully submitted,

Katherine McKay, Chair

THRIFT SHOP | CAROL KELLY

Once again I am pleased to report that we had a successful, interesting, and not to say the least – MOVING – year !! Yes, due to the renovations of the space within Mount Seymour United Church, we moved from our permanent space of over 25 years to a “swing space” for two months in the Pre-School area while they were on holiday. In late August we moved into what is now our **permanent Thrift Shop space (photo, right)**. After many months of planning, meetings, discussions and hard work, we are very happy to be in this newly created space. Thanks to the work of the Building Committee we accomplished much, made new friends and feel comfortable that it was the right time to have made this move. Thank you, one and all, for helping with this new space – to those who physically and financial made it possible.



Over this year the newly created MSUC Management Team of: Anne Devent, Barbara Ralph, Bonnie Wudrick, Carol Kelly, Cathy Hall, Dilys Sostad, Irene Huva, Linda Smith, and Meg Clark have met several times to organize and plan for the Thrift Shop.

During this year we have had several new volunteers join our “ranks” and after an orientation session, led by Wade Lifton with Lima Branch and Barbara Waldie we are in the process of working them into the sorting and selling network. The plan is to have each volunteer work with a mentor to get an idea of how and what we do each week.

Our sales this year have increased over the last year as well as the numbers of customers we see each week. The increased hours together with better advertising have combined to make this possible.

The Tea Room continues to be a place for customers together with volunteers to meet for conversation and fellowship. These volunteers provide tea, coffee and a sweet for \$1.00 to all who join them between 1:30 p.m. and 4:30 on Thursday in the newly established Café in the Narthex. This Café Space also provides a welcome space for the volunteers tea-time on Mondays – Wednesdays each week.

Special Events we have participated in during this year are as follows:

- **Maunder Thursday dinner** – once again attended by over 100 customers. Sponsored by the M & O Committee, a lovely meal was provided and appreciated by all.
- **Annual Meeting** - 35 volunteers enjoyed a lovely lunch with the opportunity to meet and chat with other volunteers. It is an event which gives us the chance to express ideas and thoughts for the coming year.
- **MSUC's Men's Turkey Luncheon** – provided an opportunity to open the new Thrift Shop and sell over a four hour period.
- **Christmas Tea for Customers** – sponsored by the M & O Committee free tea, coffee and Christmas baking were offered to all customers between opening at 11 a.m. until closing at 8 p.m.

- **Friday blitz days** – these were all day sorting/pricing occasion where all volunteers were invited to come in and work on a backlog of donations. These events were very productive and a lovely lunch was provided which added to success of the day.

The Second Annual Volunteer

Appreciation Luncheon (photo, right) was sponsored by PARC Cedar Springs at their facility on Mt. Seymour Parkway. Forty-two volunteers attend a delicious luncheon and lots of fun and games – with prizes too! Thank you PARC.



One other special opportunity was provided us when a call came from Rev. Nancy that there has been a fire in the neighbouring housing co-op. Within a few hours, several members of the Thrift Shop rallied at the Co-op with aprons and tools of our “trade” to help sort the multitude of clothing donations they had received. This was a wonderful sharing of our expertise and getting to know our neighbours. To follow up on this we have since offered each of the 24 families a \$100 credit for purchasing items in the Thrift Shop within the next 12 months. Many words of appreciation have been received from these families – making this another way the Thrift Shop reaches out into the community.

As we close out the year we want to especially thank the MSUC Building Committee Executive of James Fulton, Sharon Brain and Burton Branch for all their time and energy in making this Thrift Shop the Shop we hoped it would be. As well thanks to the staff and Board of MSUC for their support and encouragement over the past year.

As we close out this year we look forward to working closely with the many North Shore volunteers who are working on sponsoring refugees as well as our regular groups of Downtown East Side United Church, YWCA Crabtree, North Shore Youth Safe House and others. We look forward to another successful year in our new permanent space.

Submitted by: Carol Kelly and Bonnie Wudrick, co-chairs, MSUC Management Team

2015 Thrift Shop Revenue: (net after expenses)	\$ 128,128.37
2015 Contribution to First United:	\$ 20,000.00

MINISTRY AND PERSONNEL REPORT | LAURA STAUDE



We started the year 2015 with a strong team supporting the ministry of Mount Seymour United Church - Nancy Talbot as Lead Minister, Donna Dinsmore as Associate Minister, Anne Ellis as Children's Community Coordinator, Sharon Stevens as Church Administrator and our Gospel Choir Team of Marcus Mosely and Dominique Hogan.

Over five years had passed since Reverend Nancy's last sabbatical so in January she began a three-month sabbatical and Reverend Donna stepped into the role of Lead Minister. She was well supported by the staff team. Donna provided flexible and resourceful leadership during this time. Anne Ellis provided ministerial support as needed and various members of the congregation stepped in to offer insightful reflections during several Sunday morning worship services. The Caring Team, gently directed by Donna, served diligently to ensure those dealing with any hardships were connected to the Mount Seymour community through prayer, visits, cards, shawls and many other thoughtful ways.

Nancy returned on Easter Sunday ready to help lead Mount Seymour through a transitional period of renovation, moving, and adjustment. Through Nancy's careful attention to the various ministries working through and at Mount Seymour, we came out the other side of this transitional period stronger than ever. During these months, our talented and worship-centred Reverend Donna was seeking her own call to a new church community. As a result, part of the transition included prayerfully sending Reverend Donna off to her new call in Bella Coola and carefully considering putting out a call for a Minister of New and Emerging Ministries for Mount Seymour United.

Through a careful process at Mount Seymour a new part-time Associate Minister was called. Wade Lifton answered the call - he was ordained in June 2015 and fortunately felt the call to Mount Seymour, a church community he considered "home." His experiences as a minister in several church communities in the Okanagan and his efforts with different populations in the Vancouver area along with his journey in developing and connecting with wide-ranging spiritual efforts allowed him to step into the position at Mount Seymour with depth and purpose.



In the fall of 2015 Mount Seymour was very fortunate to connect with Julian Pattison, our perceptive musician who completes our Sunday morning worship team. His ability to step into this role seamlessly is greatly appreciated.

Our Gospel Choir Team of Marcus Mosely and Dominique Hogan continue to infuse our worship services with the joy of movement and a depth of emotion and spiritual fulfillment.

The community of Mount Seymour United continues to depend on Sharon Stevens as the Office Manager/Church Administrator. Her abilities to juggle multiple hats graciously is noticed and with the extended period of renovations requiring multiple adaptations this past summer her flexibility is greatly admired. In order to maintain a reasonable workload with a reduction in hours for our Church Administrator, Mount Seymour began contracting out some of its bookkeeping and accounting. Heidi Carota fortuitously agreed to serve as Mount Seymour's part-time bookkeeper in the spring and has gone above and beyond to ensure Mount Seymour's books are balanced and up-to-date. It would be very difficult to match her dedication to the church and its ministries.

As we ended the year, again we were fortunate to have another strong team supporting Mount Seymour United's ministries. With some new and some familiar members on the team, it is just as passionate and resourceful as ever in serving to enhance and carry forward the ministries at Mount Seymour.

Our team this past year has consisted of Marianne Hansen, Lima Branch, Peter Muirhead, Noreen Finnerty, Kelly Vogt and Laura Staude.

We extend our thanks and gratitude to the team of ministers and staff at Mount Seymour United.



A bittersweet farewell to Rev. Donna Dinsmore, with Rev. Nancy and Anne Ellis

PRESBYTERY REPORT | STEVE WELLENBRINK



I am excited to be the new lay Presbytery representative for Mount Seymour United Church at Vancouver Burrard Presbytery. During the 1990's I served in the same capacity for St. David's United Church in West Vancouver. In September I went to my first Presbytery meeting representing MSUC, and was pleasantly surprised to be greeted by many familiar faces after 20 years absence.

Vancouver Burrard Presbytery is a geographic collection of the United Church congregations and ministries north of 16th Avenue in Vancouver, the North Shore, the Sea to Sky region, and the Sunshine Coast. Presbytery has a key role in connecting local congregations with each other in order to work on regional issues, collaborate on social justice projects, and to assist individual congregations when they face major issues or turning points. In 2015, Vancouver Burrard Presbytery supported Capilano United Church through the emotional process of closure, the sale of the church property, and the development of a plan to distribute the proceeds from the land sale to several ministries in a way that honoured the mission of Capilano United. Further on the property theme, Presbytery has helped guide Trinity United through the creation of Heartwood Café and their plans to sell St. James Hall.

Presbytery serves to connect local congregations with specialty ministries within our region. These ministries include First United Church's ministries on the Downtown Eastside, Camp Fircom on Gambier Island, the Vancouver School of Theology at UBC, Vancouver Burrard, Youth and Young Adult ministry (YAYA), and the Longhouse native ministry.

In 2015, Presbytery worked to co-ordinate support for Syrian refugees, providing resources and information for congregations.

Oversight of ministry and personnel issues is an important responsibility for Presbytery. The terms and process of any call to ministry within the Presbytery are reviewed for issues such as fairness. Similarly, Presbytery is sometimes called to provide support or mediation when there is conflict between a minister and members of a congregation.

The biggest issue facing Presbytery is the United Church of Canada's transition from a four court system to a three court system. The current four court system includes the congregation, Presbytery, Conference (BC Conference in our case), and General Council (the national church). General Council 42 set in motion resolutions to re-organize the church into a three court system. Essentially, Presbytery will be eliminated, and a new body, similar to Conference, will be created to take over the work previously done by Presbytery and Conference. The work to plan this transition is ongoing, and will continue in 2016. I will update MSUC Council and our congregation as the process moves forward.

In preparation for the 42nd General Council of the United Church in August and the tabling of the final report of the Comprehensive Review Task Group, we were fortunate to have Rev. Janet Gear, one of the commissioners to the General Council, offer a Second Hour presentation on the report and field our many questions about the future of the church. A group of about 30 people stayed to hear Janet speak following worship in early June.

Vancouver Burrard Presbytery hosted the annual meeting of BC Conference for 2015 in Whistler. The annual meeting of BC Conference is a four day event where all the Presbyteries join together with Conference staff and ministries to work on Conference wide, national and international issues. It is a wonderful opportunity to share stories with United Church members from every corner of our Province, and to collaborate on initiatives beyond the smaller region. The work sessions are connected by truly inspirational worship times, and the annual meeting culminates with a celebration of newly commissioned, ordained and admitted ministers at the Sunday worship service. 2015 was particularly special for MSUC because it celebrated the Ordination of our Rev. Wade Lifton.

For me, worship is perhaps the most rewarding aspect of Presbytery meetings. With more than half the members of Presbytery being ministers or other worship leaders, there is such a gifted and diverse collection of musicians and worship leaders. The worship at our meetings sets the tone for the business agenda, and is also an inspiration for those present to take fresh worship ideas back to individual congregations.

If you would like further information on any of the work of Presbytery or the ministries mentioned above, please let me know.

Respectfully submitted,

Steve Wellenbrink

The United Church Creed

*We are not alone, we live in god's world.
We believe in god:
Who has created and is creating,
Who has come in Jesus, the word made flesh, to
reconcile and make new,
Who works in us and others by the spirit.
We trust in god.
We are called to be the church:
To celebrate god's presence,
To live with respect in creation,
To love and serve others,
To seek justice and resist evil,
To proclaim Jesus, crucified and risen, our judge
and our hope.
In life, in death, in life beyond death,
God is with us.*

CONGREGATIONAL LIFE: BEING COMMUNITY

Communication

With a fresh new look to our building achieved, it made sense to review our communication materials as well. With money received from the United Church's ProVision grant, we hired consultant Rhian Walker to conduct a review of our communications materials. We received some great feedback, and will be implementing these recommendations over the next year or so. First step: a new and updated website scheduled to launch in Spring 2016. Stay tuned!

Welcome Team

Our Welcome Team continues to flourish under the new leadership of Gladys Johnston (johnstongladys@hotmail.com). We continue to receive great feedback from newcomers and regulars about what a welcoming place this is. The team is always looking for Welcomers on Sunday Mornings. Whether you are old or new to the church, welcoming is a great way to meet people and widen your circle of friends.

Saturday Morning Breakfast Groups

The Men's and Women's Breakfast Groups, a long-standing tradition at Mount Seymour, continue to meet on alternate Saturday mornings for good food and fellowship. It is always a unique and fun way of starting the weekend. Contact Alan Furniss (aandkfurniss@gmail.com) and Gillian Cole (doggerel@shaw.ca) if you are interested in joining a group.

Church Library and Reading Group



Our library has become a space not just to sign out books but for fellowship. It welcomes not only church members but our neighbours who use our space to gather, for study, practice and meetings.

Our reading group continues with its monthly meeting held at the Atrium across from the church. Members come together to share and enjoy each other's ideas along with tea and cookies. -Sylvia Zandberg, MSUC Librarian.

The Caring Connection

This group led first by Rev. Donna and then after her departure by Rev. Nancy was formed in 2014 out of a merger between the prayer and pastoral care teams. They tend the congregation, wider community and thrift shop volunteers through visits, cards, phone calls, the prayer shawl ministry and intentional prayer. During the Christmas season they deliver cards and poinsettias to members of our congregation who are either unable to attend worship or have gone through a challenging time.

Thank you to Sherrill McLeary, Jen-Beth Fulton, Gwen Kendrick, Ruth Townsend, Anne Ellis, Mardi and Stan Joughin, Marianne Hansen, Gillian Cole, and Gert and Sylvia Zandberg for this valuable ministry.

2015 FUNDRAISERS AND EVENTS

Deep Cove Coffee Houses

The Deep Cove Coffee House has been well established in the community for several years now. The Coffee House monthly concerts are generally held on the third Friday of the month ([check our website for future dates](#)). For admission of \$10, you can enjoy a great concert by well known local musicians, home baking and great coffee. This is a fundraiser for our church and we are always looking for volunteers to help during the concert and to bring home baking. Last year, the Coffee House raised over \$3,800 for the church. Thanks to Jane Osborne, Jim Lyons, Jill Blair and volunteers from community that help to make the Coffee Houses such a success.

What More Could Mount Seymour Be?

A Gathering with Chris Corrigan was held in January to help the congregation clarify its Vision post building renovation.

Super Bowl Bottle Drive

A bottle drive in memory of Ray Newcombe to raise funds for First United and our Children's Ministry programs was organized by Jim and Kathy Andrews in February.

Congregational Lunches

Congregational lunches hosted by Peter and Ellen Muirhead were held in January, February, April and November along with the Church Picnic and Barbeque in June, and the Turkey lunch in November. We also had numerous lunches throughout the summer and fall to nourish and support our many volunteers giving their time to help with our renovation along with a celebratory feast when the project was done. Thank you to Peter and Ellen and all their helpers for this wonderful ministry that feeds us in body and soul and brings us together in community.

Parkgate Community Days and Christmas Tree Decorating

Again this year we had a booth at Parkgate Days in September which is a great way to connect with our neighbours and get the word out about our church. We also decorated one of the trees outside Parkgate following our "Christmas Unwrapped" theme.

Wreath Making Event

Annual Turkey Lunch, Thrift and Bake Sale



Syrian Refugee Sponsorship

We have been privileged this year to work with the other United Churches on the North Shore to sponsor families fleeing Syria. Collectively, the 8 North Shore United churches have raised \$70,000, including over \$10,000 from Mount Seymour in 2015. This has allowed us to make contact with a family of 7 who we hope will be arriving on our shores before long. This will be a reunification sponsorship as the father of the family has a brother who is a long-term Canadian resident living here in the Lower Mainland whose children are Canadian citizens. Given the generosity expressed by our congregations and the wider community we are now embarking on sponsoring a second family. Thank you to Laura Staude and Jen-Beth Fulton who have been representing our congregation in this endeavour.



PASSAGES

Baptisms

Julia Brooke Jarvis

Alexa Ruth Barnett

Reaffirmation of Baptismal Faith

Leslie Buerschaper

Joining our Congregation

Sharon Brain

Donna McKinnon

Steve Wellenbrink



Weddings

Jean Webster and Merv Hajnrych - October 17

Genevia Tam and Tomson Tai - December 18

We Remember

Mark Wilson

Tara Rhein

Don Brown

Sheila Norris

Memorial Service

January 17

February 7

June 12

December 4

GROUPS USING OUR CHURCH DURING 2015

In addition to the many church related activities taking place in our church building, many others from the community used our facilities -- some on a weekly basis, some monthly and others from time to time. These groups include the following:

Mount Seymour Preschool
The Cove Church
Alcoholics Anonymous and Alanon groups
Girl Guides (Sparks)
Cubs/Scouts

Weekly Choirs:

North Shore Chorus –practices and concerts
Singspiration Choir –practices and concerts

Concerts:

Pro Nova Ensemble (4 concerts per year)
Seycove Secondary School Community Concerts
Windsor Concert/Fundraiser
Argyle Secondary School
Deep Cove Music
Universal Gospel Choir
Marcus Mosely Chorale
Little Mountain Brass Band
Deep Cove Coffee Houses (monthly)
Blueridge Music Association
Vancouver Orpheus Men's Choir
Music Recitals - various music teachers and groups

Concerts:

Anniversary and Birthday Parties
Meetings: Strata, Blockwatch, etc.
All Candidates Meeting

MOUNT SEYMOUR CHILD DEVELOPMENT SOCIETY | GINA GALLAGHER



Mount Seymour Child Development Society
(Mt Seymour Preschool)
Report for January, 2016.

Current Board Members:

President: Alexa Romilly
Vice President: Joelle Bernardo
Treasurer: Anna Currie
Secretary: Katie Gaydon

Current Enrolment: 66 families

- AM 3's: 17 children/PM 3's: 15 children
- AM 4's: 17 children/PM 4's: 17 children



Mt. Seymour Preschool has always been committed to providing children with quality play based learning experiences. The philosophy statement which follows indicates this. *"The aim of our Preschool is to provide your child with a safe, secure, stimulating and caring environment where he/she feels free to experiment with the world through play experiences."*

Since play is a child's chief way of learning, we strive to provide rich and varied play experiences. Our curriculum planning tries to consider each child's individual needs and interests as well as their social, emotional, intellectual and physical development. We strive to help young children gain independence, self-confidence, self-control and a sense of responsibility.

We encourage social interaction between peers as this is an effective way for your child to learn to understand and deal with his/her feelings and those of others.

Mt. Seymour United Church works to make social justice part of their community and Mt. Seymour Preschool follows this commitment by often working alongside the church in projects that focus on social justice in our community.

Annual Christmas Giving Project

For the month of December, we invited our preschool families to participate in our Christmas Giving Project. We feel it is important as a preschool community to reach out and give to those who are in need. Once again we contacted First United Church to find out if they needed donations for their Christmas Meal that serves approximately 350 folks who live in the Downtown Eastside. They welcomed our offer and this year our Preschool provided the following: 16 turkeys, 35 cans of cranberry sauce, 50 pounds of onions, 175 candy canes, many chocolate bars and 5 gift cards to Tim Hortons. We also

delivered 360 dinner rolls generously donated by Cobs Bread.

Dairyland via Chris and Katie Gaydon (James' Dad and Mom), generously delivered 40 litres of milk.



Closer to home, we also assisted the North Shore Youth Safe House. Many of our families generously donated lots of warm socks, scarves and gloves, shaving cream, tooth paste, tooth brushes, nail polish, and under garments.



Bursary Fund

We are grateful for the approval and use of our Bursary Fund for a family in need of financial assistance.

We are also an **inclusive preschool**, and come highly recommended through North Shore Supported Child Development Society. We work closely with families and agencies to provide the necessary support that ensures each child has a meaningful and positive preschool experience.



Upcoming Fundraising Events

We are currently organizing Family Fundraising events to help raise funds to afford the enhancement and expansion of our current Outdoor Learning Environment. Our goal is for an Accessible Natural Outdoor Learning Area for all children and families in our community to enjoy. We will be working with Houston Landscaping a local company who has generously donated 100% of their labour and expertise. We hope to begin work in the summer of 2016.

We continue to feel very fortunate to be a part of the church community and to have Parkgate Hall as our preschool environment. We hope to be an ongoing member of this vibrant new space and look forward to ways where our preschool community may come together with the greater church communities.

We thank you for all for your continued support.

Sincerely,
The teachers of Mt. Seymour Preschool



APPENDIX 1 | MINUTES OF 2014 ANNUAL GENERAL MEETING

Minutes of the Annual General Meeting of Mt. Seymour United Church Held at 1200 Parkgate Avenue, North Vancouver, B.C. Sunday, March 1, 2015

The following 45 members/adherents were present;

Members

Carol Pettigrew, Kathy Andrews, Jim Andrews, Gillian Cole, Laura Staude, Katherine McKay, Ward Branch, Burton Branch, Lima Branch, Bryan Ralph, Barbara Ralph, Joan Fowler, Marilyn Thorpe, Kay Newcombe, Fay Butterfield, Ted Butterfield, Bill Mathieson, Barry Fenton, Sherrill McLeary, Joyce Jones, Dilys Sostad, Gwen Kendrick, Nina Huumo, Marianne Hansen, Kathryn Ferriss, Ian DeJong, Emma DeJong, Helen Talbot, Alan Furniss, Marlene Plezia, Michelle Coulombe, Jen-Beth Fulton, Anne Ellis, Doug Querns, Roger Brain, Bette Shippam, Carol Kelly, James Fulton, Sharon Stevens, Ken Fowler, Rev. Donna Dinsmore, Mardi Joughin, Stan Joughin.

Adherents: Sharon Brain, Heather Woolstone

Chair Bette Shippam welcomed those present, noted that there was a quorum present, and called the meeting to order at 11:25 am.

Rev. Donna Dinsmore opened the meeting with a prayer.

M/S (S. Stevens/J. Fulton) that the agenda be approved as presented. **Carried.**

Chair Shippam introduced the 2014-15 Council Members and council appointee, Fay Butterfield.

M/S (B. Branch/J.-B. Fulton) that the Minutes of the Annual Congregational Meeting of March 30, 2014 be approved as circulated. **Carried.**

Ministers Report: Rev. Donna Dinsmore highlighted the many groups that are working in concert at Mount Seymour United Church over this past year, asking members to raise their hands to indicate of which groups they took part. These groups/teams included Life Groups, the Caring Team, staff, volunteers, Thrift Shop Community, Building Team, and many more.

Treasurer's Report: Doug Querns presented the Financial Statements for 2014 and the 2015 budget to the congregation.

M/S (B. Ralph/K. Querns) that the Financial Statements for 2014 be accepted as presented. **Carried.**

M/S (G. Kendrick, J. Andrews) that the budget for 2015 be accepted as presented.

Carried

Capital Campaign Report - Campaign Chair Ward Branch presented the results of the successful 2014 *There's Something More* Capital Campaign. Presently, \$310,856 has been received towards the renovation and is deposited in the bank in a high interest savings account. The remaining \$210,144 has been pledged to arrive over the next 3 years.

He reminded donors to submit their 2015 donations to church as soon as possible to decrease the bridge financing needs.

Building Team Presentation: James Fulton, Chair of the Building team, introduced the Building Team. He led us through a slide presentation that included the projected schedule for the upcoming renovation, the project cost summary, as well as the rendered drawings created by our hired Architect Firm, Shape Inc. The project cost came in within the budget, \$520,000, and the project is proceeding on schedule. The Building Team is inviting MSUC members and the public to an open house on March 15, 2015 at which time the architect will be there to discuss the project, and to answer any questions.

M/S (T.Butterfield/K. Fowler) that the 2014 Annual Report be received as presented. **Carried.**

MSU Council Elections

- a. M/S (A. Furniss, D.Sostad) to extend Chair **Bette Shippam's** (2011-present) term to 5 years (June 2016), to accommodate the Chair vacancy, created by past Chair Lisa Reinder's departure, and filled last year by B. Shippam as *pro tem*, to two years.
- b. Retiring and Resigning Council - Doug Querns (2011-2014), Ward Branch (2011-2014)
- c. Continuing Council
- d. Chair Shippam presented the following candidates to be elected to serve on the Mount Seymour United Church Council for the fiscal year commencing June 1, 2015.

Mission and Outreach Team – *Katherine McKay*

Worship and Christian Development Team – *Catherine Branch*

Member-at-Large- *Barry Fenton*

Treasurer - *remains open*

Presbytery Rep – *remains open*

Chair Shippam called for further nominations and, hearing none, declared the above elected by acclamation.

The Treasurer and Presbytery Rep positions remain open. Council is actively seeking candidates for these positions, which are required to be filled by June 1, 2015.

Chair Shippam indicated that the Treasurer position may need to be filled from within the current

council. The Presbytery Rep may need to remain open another year; but our congregation is well represented at Presbytery meetings with Rev. Nancy Talbot, Rev. Donna Dinsmore, and members Rev. Marianna Harris and Marc Coulombe attending most meetings.

Joyce Jones thanked all the hard working staff at MSUC which was vigorously supported by members present.

Rev. Dinsmore closed the meeting with a prayer of gratitude.

M/S (C. Kelly/L. Staude) that the meeting be adjourned at 12:35 p.m. Carried.

Bette Shippam, Chair 

Sharon Stevens, Recording Secretary 

APPENDIX 2 | STATEMENT OF FINANCIAL POSITION AT DECEMBER 31, 2014

	2015	2014
ASSETS		
Current Assets		
Cash	25,356	11,196
GIC Accounts	28,348	155,542
Renovation Fund	25,775	234,365
Pledges Receivable	94,777	0
Accounts Receivable	16,852	1,481
	<u>191,108</u>	<u>402,584</u>
Property, plant and equipment		
Land	425,151	425,151
Building	1,120,765	1,120,765
Furniture and Equipment	103,037	102,575
	<u>1,648,953</u>	<u>1,648,491</u>
TOTAL ASSETS	<u>1,840,061</u>	<u>2,051,075</u>
LIABILITIES		
Accounts payable	4,489	24
Mission and Service	1,736	3,117
Misc. Funds	0	1,245
First United Church	20	1,413
Syrian Refugee	7,493	0
2015 Provision Grant	13,586	0
Bridge loan	120,552	0
	<u>147,875</u>	<u>5,799</u>
NON CURRENT LIABILITIES		
VIM Loan	305,045	305,045
EQUITY AND FUNDS		
Sabatical Fund	8,032	20,000
Memorial Fund	18,944	19,357
General Contingency fund	0	1,149
Building Contingency fund	1,417	96,452
Renovation Expenses	-643,133	0
Renovation Fund	643,133	226,325
	<u>28,393</u>	<u>363,283</u>
Equity		
Opening Balance	1,376,948	1,401,439
Net Income for the year	-18,200	-24,490
	<u>1,358,748</u>	<u>1,376,948</u>
	<u>1,387,141</u>	<u>1,740,231</u>
	<u>\$1,840,061</u>	<u>\$2,051,075</u>
Renovation expenses	-643,133	
Bridge loan after July 1, 2015	120,552	
Donations collected to July 1, 2015	427,548	
Building Contingency Fund	95,033	
Total	<u>0</u>	

APPENDIX 3 | INCOME STATEMENT FOR PERIOD ENDED DEC 31, 2015 AND 2015 BUDGET

	2015 Actual 31-Dec	2014 Actual 31-Dec	2016 Budget Annual
REVENUE			
Offering Envelopes & PAR	130,643	142,827	135,000
Open Offering	7,002	8,008	7,500
Special Offering	11,475	5,379	10,000
Fund Allocation	12,876	6,124	-
Total Givings	161,997	162,338	152,500
OTHER REVENUE			
Rentals	26,239	34,373	32,500
Memorials & Weddings	3,150	1,950	2,000
Catering	-	(2)	-
Thrift Shop	139,169	128,426	145,000
Interest	2,306	2,334	1,150
Fundraising (coffee house)	3,843	5,852	4,000
Fundraising (Youth/BBQ/Turkey Lun	2,268	-	300
Misc	1,653	-	1,000
Total Other	178,627	172,933	185,950
Total Revenue	340,624	335,271	338,450
EXPENSES			
A TEAM			
A Copier	5,018	6,200	6,000
A Office Supplies & postage	2,163	1,970	2,000
A Telephone	1,773	1,210	1,800
A Bank Charges	1,618	838	1,200
A Computer /Misc	927	736	1,000
Total Administration	11,499	10,954	12,000

	2015 Actual 31-Dec	2014 Actual 31-Dec	2016 Budget Annual
Property			
P Bld Maint	11,276	3,873	5,000
P Equip Maintenance	1,025	666	1,000
P Grounds/ Handy person	1,102	698	1,000
P Sound Maint	256	12,386	500
P Bld Heat Maint	1,439	1,046	1,500
P Security	425	307	500
P Janitorial	14,252	11,487	14,000
P Garbage	2,413	2,000	2,500
P Water & Sewer	2,323	1,743	2,000
P Gas & Electric	10,493	9,049	10,000
P Snow	-	-	-
P Telephone Office	2,675	2,237	2,500
P Insurance	8,393	7,308	10,000
P Kitchen Supplies	26	653	500
P Thrift Shop Improvements	11,041	1,829	2,500
P Campaign Building & Equipment	56	-	-
Growth Fund Expenditures	-	2,530	-
Total Property	67,194	57,810	53,500
TOTAL ADMINISTRATION TEAM	78,693	68,765	65,500
WORSHIP & CD			
Pulpit Relief	900	500	500
Childrens Community	275	331	300
Youth	-	214	175
Library / Misc	-	183	100
CD Adult	312	368	300
Congregational Meetings	-	-	-
Music Youth	-	200	100
Music Adults	292	148	200
Music Supplies	-	335	150
Music Director Relief	1,200	500	1,000
Volunteer Training	-	68	-
Music Piano/Organ Tuning	-	329	150
Worship Misc Supplies	1,102	427	750
Sound Production	407	378	400
TOTAL WORSHIP & C. D.	4,488	3,982	4,125
COUNCIL			
Presbytery	11,395	11,724	11,500
Other Expense	501	578	500
TOTAL COUNCIL	11,895	12,302	12,000

	2015 Actual 31-Dec	2014 Actual 31-Dec	2016 Budget Annual
CONGREGATIONAL LIFE			
Advertising	196	350	-
Fellowship (Lunches/welcoming)	1,012	734	1,000
Observer Magazine	254	76	150
Sundays - coffee	1,684	1,178	1,500
Misc.	-	-	-
Pastoral Care	-	296	150
TOTAL CONGREGATIONAL LIFE	3,146	2,634	2,800
CONG. MISSION			
Mission and Outreach	2,044	292	2,070
First United Thrift Shop Donation	20,000	20,000	20,000
Renovation Fund Thrift Shop Donation	-	26,298	-
Refugee Family Sponsorship	-	-	-
Help Fund	-	125	-
Growth Fund- Seniors Bus Program	-	6,899	-
TOTAL MISSION	22,044	53,614	22,070
MINISTRY & PERSONNEL			
Wages	154,027	138,471	182,613
Housing Allowance	30,887	42,000	-
Ministers Travel	187	2,444	2,000
Sabbatical Fund	11,968	203	4,000
Staff Dev Cont Ed	2,958	1,906	2,959
Honorariums	1,150	-	-
Vacation	-	-	600
CPP	5,440	5,215	5,850
EI	3,351	3,416	3,200
Employee Benefits	22,164	22,846	22,200
M&P Discretionary	750	-	-
MSP	486	648	650
Work Comp	380	335	400
Hosting	308	647	500
Other Payroll	4,500	32	6,200
TOTAL MINISTRY & PERSONNEL	238,558	218,164	231,172
TOTAL EXPENSE	358,824	359,461	337,667
OPERATING SURPLUS/DEFICIT	(18,200)	(24,190)	783

	2015 Actual 31-Dec	2014 Actual 31-Dec	2016 Budget Annual
VIM Loan Payments			
CASH SURPLUS / DEFICIT	(18,200)	(24,190)	783
Outreach Contributions - 2015			
M & S	15,345		
Thrift Shop	20,000		
Other Outreach (FU)	3,395		
Total	\$ 38,739		



~SPIRIT NURTURING
~LIVING GENEROUSLY
~BEING COMMUNITY



Mount Seymour United Church
1200 Parkgate Ave North Vancouver, B.C.
www.mtseymourunited.com mtsuc@shaw.ca